

FP0101

Electromagnetic Door Holder

DESCRIPTION

The FP0101 is a slimline electromagnetic door holder designed to allow fire and smoke doors to be held open under normal conditions, but to automatically close under their own spring return mechanism when a fire or smoke alarm system is activated.

FEATURES

- Isolates areas in emergency conditions
- Free access during normal conditions
- No moving parts
- Flush or Surface Mounted
- 25 kg (approximately) holding load
- Manual release button included
- Low voltage

APPLICATION

FP0101 Electromagnetic Door Holders are designed for use in locations where it is essential that doors are automatically closed in the case of fire alarm condition whilst providing free access during normal conditions. This can include buildings such as hospitals, libraries, hotels, offices, theatres and workshops.

COMPLIANCE

The Door Holder has been fully tested and approved by relevant authorities.



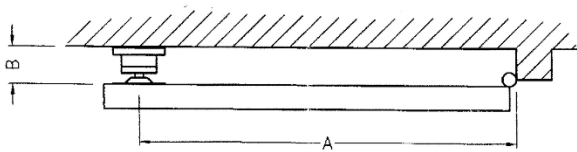
INSTALLATION

The Door Holder is suitable for surface or flush mounting. For flush installation, the door holder mounts on an electrical industry-standard single flush box. Care should be taken to ensure that this box is securely fixed. If additional spacing from the wall is required, then standard surface mount switch plate blocks and spacers can be used.

The door holder is located on the leading edge of a door and may be installed at any height. To avoid damage and make building cleaning easier, the recommended position is at the top of a door.

ADDITIONAL INFORMATION

For maximum pull, the door holder should be mounted as shown with magnet and armature plate parallel. Length 'A' must be at least 3 times length 'B' for the door holder to provide adequate pull.



PLAN VIEW OF MOUNTED DOOR HOLDER

Note: It is advisable to provide a reverse connected diode across the terminals of the electromagnet, to prevent the driving circuit from being affected by the back EMF when the circuit is opened.

SPECIFICATIONS

Part Number: FP0101

Part Description: 24V DC Magnetic Door Holder

Dimensions (mm):

Door Holder: 118 H x 74 W x 27 D

Armature Plate: 75 diameter x 23 D

Weight: 0.6 kg (magnet and armature plate)

Holding Load (nominal): 25 kg, 24V DC, 20°C

Operating Voltage: 24VDC \pm 20%

Operating Current: 50 mA nominal

Operating Temperature: 0°C to 60°C

Cable Termination: 2x 1.5mm² cables

Cable Access: Rear Entry

Armature Plate Angular Accommodation: 15°