

# 35770/35771 SERIES

## Extension Magnetic Door Holders

### DESCRIPTION

The Magnetic Door Holders are designed to hold fire doors, smoke doors and the like. They are interconnected to the buildings fire alarm system.

In the event of a fire alarm condition, the Magnetic Door Holders release and permit the doors to return to the closed condition.

The Magnetic Door Holders do not have moving parts as they rely completely on electromagnetic attraction.

The armature incorporates a special anti-vibration rubber, which cannot wear and simplifies installation

### FEATURES

- Isolates areas in emergency conditions
- Free access during normal conditions
- No moving parts
- Flush or Surface Mounted
- 40 kg (approximately) holding load
- Manual release button included
- Low voltage (12V or 24V DC)

### COMPLIANCE

The Door Holders have been fully tested and approved by relevant authorities.



### APPLICATION

Magnetic Door Holders are designed for use in locations where it is essential that doors are automatically closed in the case of fire alarm condition whilst providing free access during normal conditions. This can include buildings such as hospitals, libraries, hotels, offices, theatres and workshops.

### INSTALLATION

In order to avoid damage and to facilitate building cleaning operations, it is recommended to install the unit at the top of the door.

The armature section is design to fit single gang electrical wall boxes at which wiring should terminate. Care should be taken to ensure that wall boxes are securely fixed and not reliant on plaster or render for strength.

## ACCESSORIES

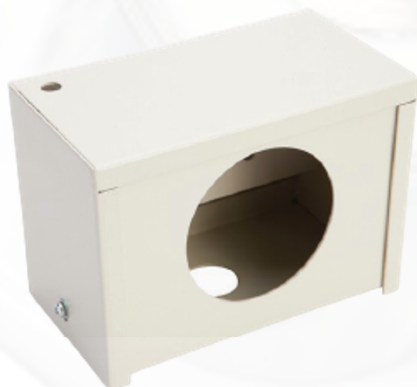
### Door Holder Release Switch

In addition to the Manual Release Button on the main unit, a separate Push Button Switch can be installed away from the door. This switch can release the door from a remote location or can be installed near the door in an easy to find location.



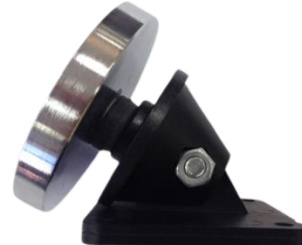
### Floor Mount Door Holder Box

The Box provides a convenient and attractive cover protecting the door holder from accidental damage. Available in cream wrinkle powder coat.



### 30 Degree Swivel Option

This 30 Degree Swivel Armature Plate can be supplied as an option.



## SPECIFICATIONS

Part Number: 35771  
Description: 24V DC Door Holder  
Current Consumption: 52mA  
Weight (kg): 0.95  
Dimensions(mm): 115 H x 74 W x 50 D

Part Number: 35770  
Description: 12V DC Door Holder  
Current Consumption: 105mA  
Weight (kg): 0.95  
Dimensions(mm): 115 H x 74 W x 50 D

Part Number: FMDHB  
Description: Floor Mount Door Holder Box  
Colour: Cream Wrinkle Powder Coat  
Weight (kg): 0.56  
Dimensions(mm): 85 H x 120 W x 70 D

Part Number: EA0405  
Description: Door Holder Release Switch  
Maximum Current: 12A  
Weight (kg): 0.10  
Dimensions(mm): 118 H x 74 W x 30 D

## SPARES

Part Number: 17295  
Description: Armature Plate  
Weight (kg): 0.15  
Dimensions(mm): 30 H x 70 W x 70 D

Part Number: 17295/30  
Description: 30° Swivel Armature Plate  
Weight (kg): 0.15  
Dimensions(mm): 55 H x 65 W x 65 D